

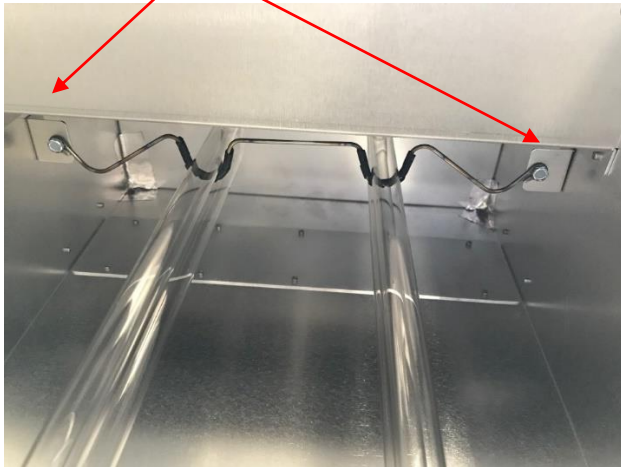


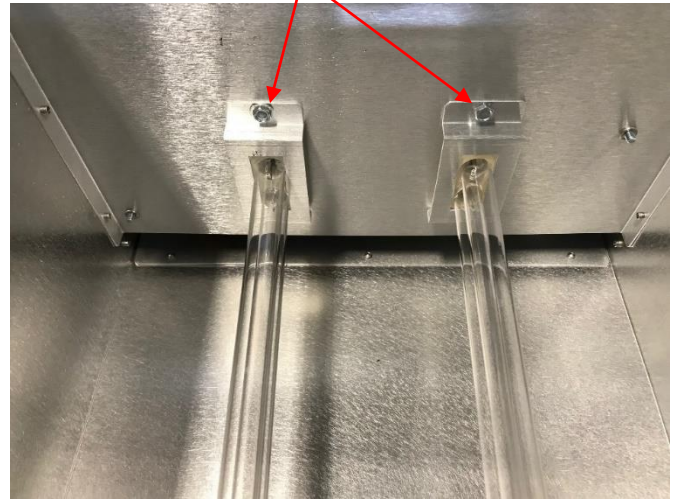
Instructions for Model 300 Bulb Replacement:

- 1) Toggle the power switch located on the unit's control panel to OFF.
- 2)  Wait 15 minutes for the ozone to clear from the Bluezone reaction zone.
- 3)  **WARNING:** Before proceeding to next step, unplug the unit from it's power supply.
- 4) Use the 1/4" hex nut driver to unscrew the 10 screws on the cover.
- 5) Slowly, remove the cover and place it on a flat surface.
- 6) Use the gloves provided to remove and replace the bulbs. This will prevent oil on your hand from damaging the new bulbs.
- 7) Unscrew the 1/4" screws on Bulb Support Wires.



- 8) Carefully remove Bulb Support Wires and place aside to replace after bulb changeout.

- 9) Unscrew 1/4" screws on Bulb Clips.

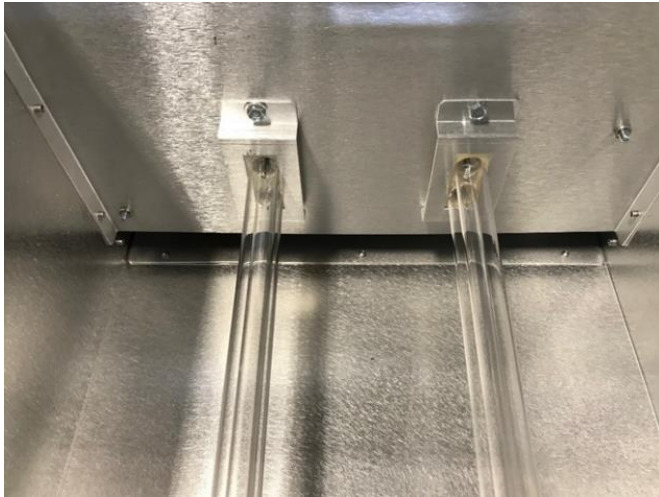


- 10) Carefully remove Bulb Clips and place aside.
- 11) Remove all four bulbs by carefully pulling on the ceramic base.



- 12) Hold replacement bulbs by the ceramic end and push the pins into the slots in the receptacle.
⇒ They need to be pushed in until a "click" is heard and felt.

- 13) Put Bulb Clips over new bulbs and use screws to tighten Bulb Clips in place.



- 14) Replace Bulb Support Wires on top and bottom of bulb pairs. Use screws to tighten Bulb Support Wires in place.
- 15) Tighten cover back onto the unit.
- 16) Dispose of used bulbs, according to standard practice for florescent bulbs.



IMPORTANT

- 17) Press and hold the bulb counter reset button for 3 seconds. The display screen will read "Hold: reset counter" during the 3 second hold.
- 18) After holding for 3 seconds, release and press the bulb counter reset button again to finalize reset. The display screen will read "push to confirm" after the 5 second hold.

Estimated total bulb replacement time: approximately 20 minutes per unit.